



SPLIT BRACKET

PREMIUM VERSION



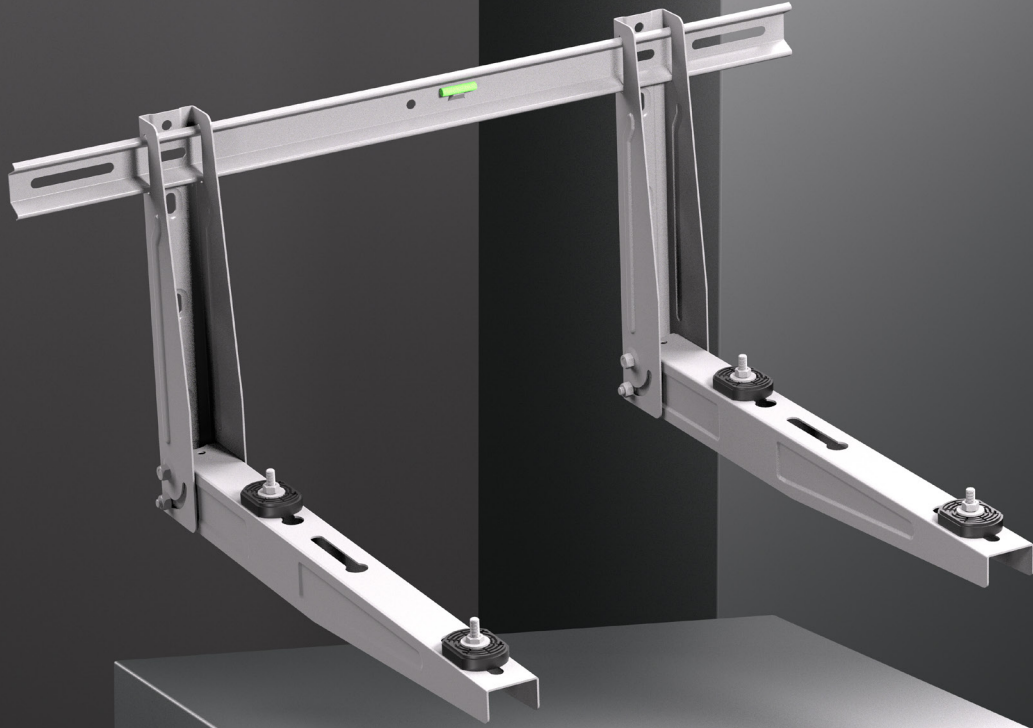
COLOUR



CERTIFIED
160 KG



WALL
INSTALLATION
BRACKETS



GRINTA
ANTIVIBRATION DAMPERS



DOUBLE M8 8.8
PRE-ASSEMBLED SCREWS



[IT]

**STAFFA PREMONTATA CON
DOPPIA VITE M8 PER UNA
FACILE INSTALLAZIONE.
VERNICIATURA A POLVERE
AD ALTA RESISTENZA.**

[EN]

**SUPPLIED PRE-
ASSEMBLED WITH
DOUBLE M8 SCREWS FOR
AN EASY INSTALLATION.
HIGH RESISTANCE
POWDER COATING.**

[FR]

**SUPPORT FOURNI PRÉMONTÉ
AVEC DOUBLE VIS M8 POUR
UNE INSTALLATION FACILE.
PEINTURE EN POUDRE
À HAUTE RÉSISTANCE.**

[DE]

**VORMONTIERT MIT DOPPELTEN
M8-SCHRAUBEN FÜR EINE
EINFACHE INSTALLATION.**



S-491P-012	P450xH400xL800 mm	120 set	160 kg
S-462P-012	P520xH400xL800 mm	120 set	160 kg
S-463P-012	P560xH400xL800 mm	120 set	160 kg
S-464P-012	P600xH400xL800 mm	120 set	160 kg

P = Preassembled

Fornito con cursore Grinta:

Consente un'installazione facile e veloce senza l'uso di chiavi.

Supplied with Grinta dampers:

Allows an easy and fast installation without use of a wrench.

Fourni avec des amortisseurs anti-vibration Grinta :

Installation facile et rapide sans l'utilisation d'une clé.

Wird mit Grinta Schwingungsdämpfer geliefert:

Ermöglicht eine einfache und schnelle Montage ohne Schraubenschlüssel.

Realizzati in gomma SBR. Carico massimo: 160 kg/ kit

Made in SBR rubber. Max. load: 160 kg/ kit

Fabriqué en caoutchouc SBR. Charge max : 160 kg/kit

Hergestellt aus SBR-Gummi. Max. Belastung: 160 kg/Bausatz

Information correct at time of going to press.

EU part of ASPEN PUMPS GROUP

aspenspumps.com | +44 (0)1323 848842 | sales@aspenspumps.com